



Beam Communications Pty Ltd
 8 Anzed Court, Mulgrave
 Victoria, Australia, 3170
 T: +61 3 8851 0400
 F: +61 3 9560 9055
 E: info@beamcomm.net
 W: www.beamcomm.net



Fixed site SatRADIO

RST820

Quick Start Guide

Accessing Speed Dials form Radio Handset

The quick-dial mechanism can also be used if any of the quick-dial numbers have been setup in the SatRADIO. Dial PIN, then a digit between 0->9 then *, to identify the quick dial number. The quick dials can be programmed only using the Beam Management System when connected with a PC to the configuration port.

The quick dials are accessed in the following way;

1. Ensure the quick dial locations have been programmed in the main satellite terminal
2. Enter the PIN from the handset as per above instructions
3. Once acceptance pips received enter a Quick Dial location digit between 0->9 then *, obviously only those locations that have been preconfigured can be called in this manner.

For example if you enter your PIN followed by 2 * this would dial the preset Quick Dial in location 2

Answering a call

There are two ways of answering a call on the two-way radio, by either using the DTMF controls on the handheld to accept the call or if you want all incoming calls answered automatically. This can be configured on the terminal.

Answering on a Radio

A RING signal will be intermittently transmitted on the Radio channel and the handheld user can reply to answer the incoming call by sending a DTMF-0 to answer the incoming call.

Note: The DTMF-0 must be sent in the gap between rings for it to be heard by SatRADIO.

Auto Answer

The firmware can be set to automatically auto-answer an incoming call as long as the Radio is On.

Note: Auto answer cannot work concurrently with Autodial being ON

Using Autodial Mode

This mode enables the RST820 to continuously maintain a phone call link to either the last dialed destination or the Quick Dial position "0" if configured that way. This is ideal for emergency or disaster recovery situations when the terminal may be being used as a primary communication tool or a replacement for a Radio link that is down.

Setting up Autodial feature

The Auto-dial switch indicates to the SatRADIO that a number is to be auto-(re)dialed once the Radio is turned on

There are two means of setting an Autodial number into the system

- 1/ Last number dialed
- 2/ Quick Dial location "0" (zero)

Last number dialed

The last number dialed is simply the last number dialed on the SatRADIO either via the Iridium handset or the DTMF radio. This provides the most convenient means of having an easily changeable number, however caution must be exercised as the Autodial switch will automatically dial as soon as activated. To check the last number dialed simply take the handset from the cradle and press the OK button this will display the last number dialed. To enter a new number simply enter the number in the full dialing sequence and then press OK

Now as soon as the Autodial switch is activated this is the number that will be continually attempted to be called. If at any time the call drops out the system will automatically redial in order to re-establish the call within 20 30 seconds.

Quick Dial - Autodial

The Quick Dial Autodial feature uses the Quick Dial memory location "0" of the satellite terminal. This enables a fixed number to be programmed for permanent application where the SatRADIO is always to call the same location. This is PIN protected using the Beam Management System and can only be changed by an authorized person.

So long as the main terminal has been set up for Quick Dial with a number programmed into location "0" then as soon as Autodial is switched ON then the system will automatically and continually maintain a call with the preset number.

Hanging Up: To deactivate Autodial switch Autodial button to OFF or alternatively switch the Satellite Terminal to OFF.

USRMAND000xxx

Thank you for purchasing the BEAM RST820 SatRADIO

This QuickStart Guide lists the steps to install your BEAM Satellite equipment:

1. Install SIM card
2. Getting started
3. Making calls...

Package Contents

Before commencing installation ensure your package has the following components:

- 1 x SatRADIO unit in rugged case
- 1 x Iridium Handset with curly cord
- 1 x RST915 magnetic-mount Iridium antenna with 5m cable
- 1 x Radio Handset with curly cord
- 1 x 110V/240V IEC AC power lead
- 1 x DC power cable
- 1 x Hex-Wrench for SIM cover
- 1 x Printed user manual
- 1 x Printed Iridium Antenna Guide

1 Installing your SIM card

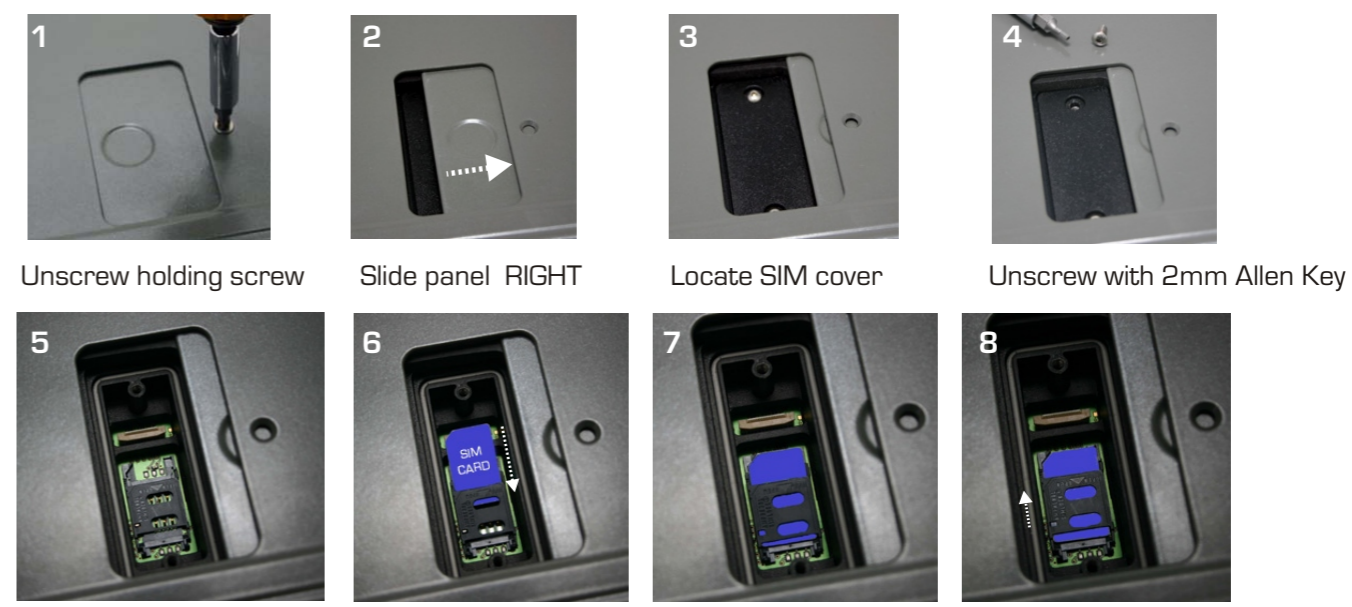
The RST820 requires that an active Iridium or Telstra Mobile Satellite SIM card to be installed. This is **not** included with this RST820 kit.

Refer to your place of purchase if you do not have an active SIM card enabled to make Iridium Satellite calls.

Tools required:

1. Philips-head screwdriver
2. Allen Key (supplied)

Follow the instructions below to install your SIM card:



5. Slide the top black clip back towards you. 6. Flick this clip up to expose the rails to slide the SIM into(7). 8. Gently push down on the grey SIM housing and **push** away from you to LOCK the SIM in place.

Replace covers by following steps 4 to 1.

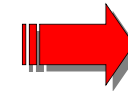
NOTE: Metallic SIM contacts must be face-down to engage with the SIM card reader.

Optimising Iridium performance

More info @ www.beamcomm.net

Iridium is a line-of-sight Satellite network, conditions that can compromise the quality of the service you may receive include:

1. **Obstructions:** Provide the best satellite view for your antenna by removing all obstructions where possible
2. **Cabling:** Use the shortest cable length and the fewest number of connectors on all Iridium certified antenna cable runs
3. **RF Interference:** Install antenna as far away from other transmitters as possible.



Using your BEAM RST820 Fixed Site SatRADIO

2 Connecting the Antenna Cable

Plug the antenna cable into the TNC antenna jack located on the front right side of the RST820 case. Ensure that the specified cable being used does not exceed the Iridium maximum-loss rating of 3dB to ensure maximum performance of the terminal. Refer to your Service Provider for full details or to purchase and approved cable if using a cable other than the magnetic mount antenna included.

Connecting the Power Cable (if required)

Make sure the AC power switch supplying the RST820 is OFF. Plug in power cable into the 2-pin power socket located on front left side of RST820 case. Only use plug pack provided.

Connecting to the Data Port (if required)

Connect a PC/Laptop to the Data port to make dial-up modem calls. The Iridium data speed is 2400bps, and can be as high as 10kbytes if using Direct Internet compression. A data call cannot be made at the same time as a voice call.

Connecting to the Config Port (if required)

Connect a PC/Laptop to the Log port to use the Beam Management System. The Config Port should only be used for configuration and control of the terminal equipment.

3 System Power up

After installation has been completed, the RST820 system is now ready to be switched on. To turn on the system:

1. Switch on the Radio Component by simply selecting the ON position
2. Switch on the Satellite Component by simply selecting the ON position

3. Ensure that the Autodial switch is off, this will avoid making unnecessary calls when the unit is first powered on

4. Wait for the system to initialise and the DPL Satellite Handset to show registered status. This will typically take 40 to 60 seconds.

5. Once the Signal LED is solid green or orange, a call can be made attempted.

4 Using the Two-Way Radio

The RST820 is installed with a Two-way radio interface that will be to the specification when the terminal was purchased. The component needs to be tuned to your desired channels to ensure that it can communicate with other radios within your user group. Tone or CTSS squelching schemes can be programmed on the SatRADIO terminal.

To ensure optimum performance check the following

1. Ensure the Radio component is switched on and there is power to the Radio control handset
2. Ensure that the other Radios you want to interface with this unit are on the same frequency as the RST820 main terminal.
3. Test that from the Radio Control handset you can talk to the other radios on the same frequency / Channel. If not ensure that the correct Channel has been selected and any required CTSS or tone squelch has been set up correctly.
4. There is a speaker control button on the RST820 that allows you to monitor the audio on the Radio. Simply press to switch on/off
5. If you do not believe that you have communications between your Radio's consult your radio provider to ensure the unit has been programmed to your required channel set up.

5 Operating the Satellite Module

The RST820 is installed with an Beam SatRADIO interface. The Satellite module provides the air interface to allow two-way radio systems to interface to either another Beam SatRADIO terminal or any terrestrial phone service anywhere on earth. There are three key ways to use the Satellite component of the RST820:

1. Handset Mode

This mode enables you to simply make a satellite telephone call using the Iridium handset of the terminal. Simply take the handset off the cradle and make a satellite call as though you were using a typical cellular telephone.

Radio Handset DTMF Model

Using a DTMF compatible Two-way Radio it is possible to make or receive a call over the satellite network from the Radio device. To make a call from a Radio handset a PIN is required. This is configurable, and to protect against unauthorized calling.

2. Autodial Mode

This mode enables the RST820 to continuously keep connected into a preset destination. This is ideal for emergency or disaster recovery situations when the terminal may be being used as a primary communication tool or a replacement for a Radio link that is down.

3. Satellite Handset Mode make a satellite telephone call using the Intelligent handset of the terminal, **similar to** using a typical cellular telephone.

1. Remove the handset from the cradle by pushing the handset up

2. Enter the phone number you wish to call.

A. Consult your Satellite SIM provider for standard dialing instructions as this may vary depending on the type of satellite SIM used

3. Once the number has been entered press the **OK** button to commence calling. To **end** call simply press **C**

To adjust the volume in call simply press the **arrow up/down** on handset

6 Handset Mode Transferred to Radio Mode

It is possible to make a call on the Intelligent Satellite handset and then place the handset back into the cradle to connect the call through to the Radio network, in order to this you must activate the autodial switch by placing it in the on position and then returning to the on position.

Using a Radio Handset DTMF Model

Using a DTMF compatible Two-way Radio it is possible to make or receive a call over the satellite network on the Radio device. To make a call from a Radio handset a PIN is required. This is configurable to protect against unauthorized calling.

Making a call

1. Ensure that the Autodial switch on the main terminal is turned OFF as it is not possible to override autodial status.

2. Ensure the radio handset is on the same frequency as the main unit

3. Ensure the Satellite & Radio units are both powered ON (default PIN is 9876)

4. Whilst pressing the transmit button of the radio enter the PIN to access the system.

A. If PIN accepted a couple of acceptance pips are issued to indicate it is now ok to dial the phone number.

B. If the PIN number fails the handheld user receives a rising crescendo tone.

C. The access (after the PIN has been entered) times out after approx 10 secs, after which the PIN will need to be to be re-entered.

D. In the event you have trouble entering the correct PIN wait 20 secs between **attempts** to allow the reset the unit.

E. Remember that it is not possible to transmit DTMF tones whilst another party is transmitting on another radio in the group.

5. Once the acceptance pips are heard depress the transmit button and enter the full number you wish to call, and then release the button.

A. Usually the transmit button of the radio needs to be pressed the entire time the number is being entered In order to transmit the tones to the base unit.

B. If the dialed number seems to be a valid format acceptance pips will be transmitted to the handheld from the satellite base.

C. If the number is invalid then a FAIL tone is sent; a long, low, beep.

6. Progress calling tones will be heard whilst the call connects, if the number was incorrect or the satellite network is not available a busy tone will be heard through the radio network.

7. Hanging up the call: If the call was manually dialed or was incoming, it can be hung-up by the handheld user by simply pressing the transmit button of the radio followed with a DTMF- 0. (zero).

If any problems, try the following:

1. Repeat these instructions to ensure everything has been completed.

2. Is there power to the unit?

> Check all connections and fuses.

3. Is the SIM card active?

> If not, refer to your Service Provider

4. If the antenna signal is not strong you will need to move location to access better coverage and re-test.

For additional troubleshooting refer to your manual or visit us:

www.beamcomm.net