

# Installing the Beam Management System (BMS)

In order to configure the Beam Remote Satellite Terminals and TrackALERT interface units, the Beam Management System (BMS), software must be installed on your PC / Laptop.  
Once the BMS is installed you will then need to connect your PC /Laptop to the **LOG Port** of the Beam terminal.

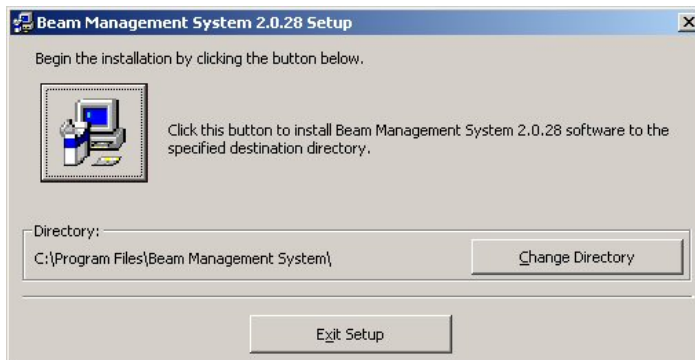
## Installing the BMS Software on your Computer

The install package comes with 3 files:

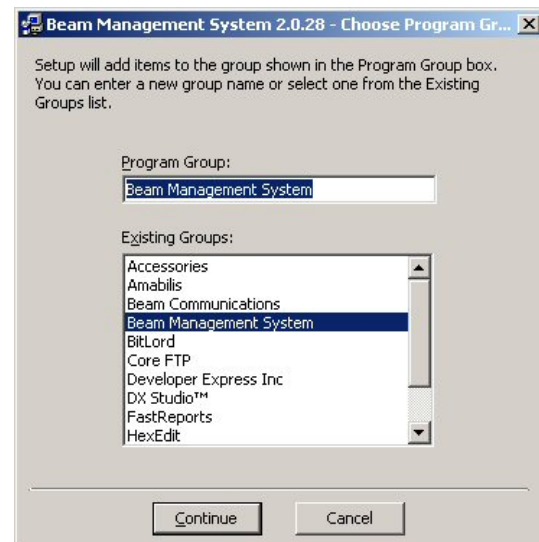
1. Setup.exe
2. BMS.CAB
3. Setup.lst

1. To start the install double click on *Setup.exe*

2. Click OK on the welcome screen:



3. The default installation directory will be "C:\Program Files\Beam Management System\", however if you wish to install it to a different directory, click the [Change Directory] button to choose a different directory. Click the PC icon when you are satisfied with the installation location:



4. Select the program group that the BMS will be available from under the start menu, then click Continue.

5. The installation will then continue, and will inform you once the install is complete with the following confirmation. Click OK.

## Launching BMS

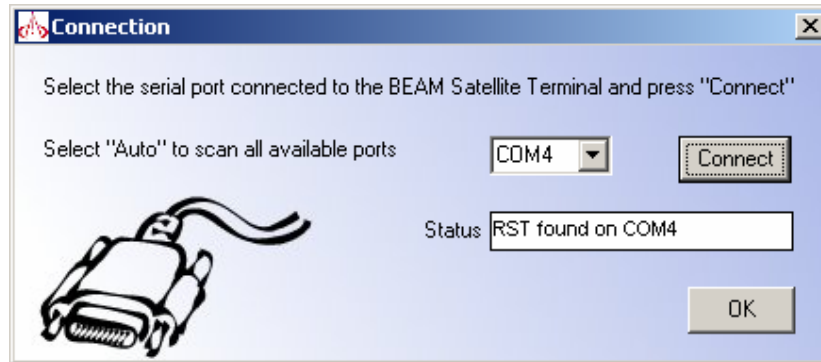
From the Windows® Start Menu:

Select **Programs -> Beam Management System -> Select Beam Management System**

# Start Using Beam Management System

To access the Supervisor Menu of the terminal through the BMS follow these steps:

1. Ensure the Beam terminal is connected to your PC via the **LOG Port**.
2. Open the BMS application as described in the 'Launching the BMS' section of this document.
3. The first time you run the BMS, it will prompt you to enter the port you are connected on. Select your port from the dropdown list and click Connect. If you do not know what port you are connected to, select 'Auto' and the BMS will attempt to detect the port. Click OK when the BMS has detected the attached Beam device.



4. Enter the Supervisor PIN at the following prompt. (the default Supervisor PIN is **3170**)



5. Once logged in, you will be presented with the Beam Management System User Interface.



You are now ready to configure your device. Refer to the BMS Help file for more information on any settings you require assistance with.