



SatDOCK 9555
Firmware Upgrade Guide

Table of Contents

Requirements	3
Procedure to upgrade firmware.....	4
Additional functionality of the upgrade tool.....	7
SatDOCK 9555 Status Button.....	7
Factory defaults Button.....	7

Requirements

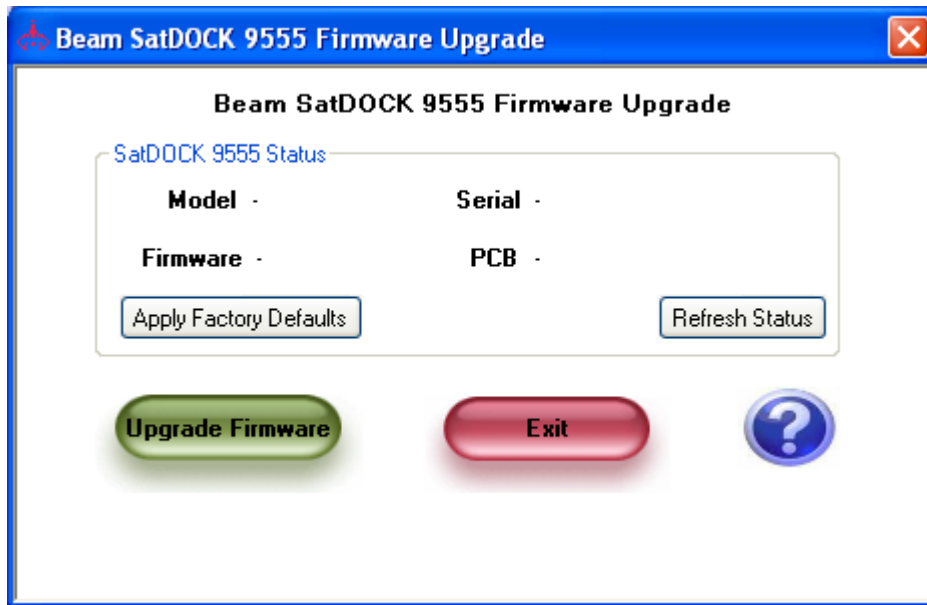
- .NET 2.0 is required to be installed prior to running the application.
- PC with Windows 2000 sp4/windows XP/windows VISTA
- A mini-USB-B to USB-A cable
- SatDOCK 9555
- Hands-free module
- Power supply
- Beam USB driver



Please ensure the Beam USB drivers are installed prior to running the upgrade application.

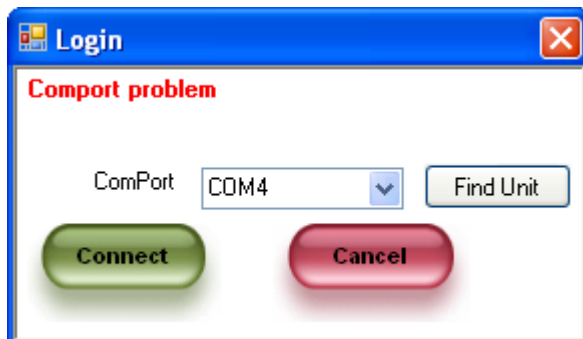
Procedure to upgrade firmware

1. Undertake the following before starting the application
 - Connect the SatDOCK to Hands-free module
 - Connect power to the Hands-free module
 - Attach the SatDOCK to the computer via USB cable
2. Run the application by clicking on the “SatDOCK 9555 Firmware Upgrade.exe” file. The following window will appear once the application is running.



If you are running the application in windows VISTA, a security warning may appear.

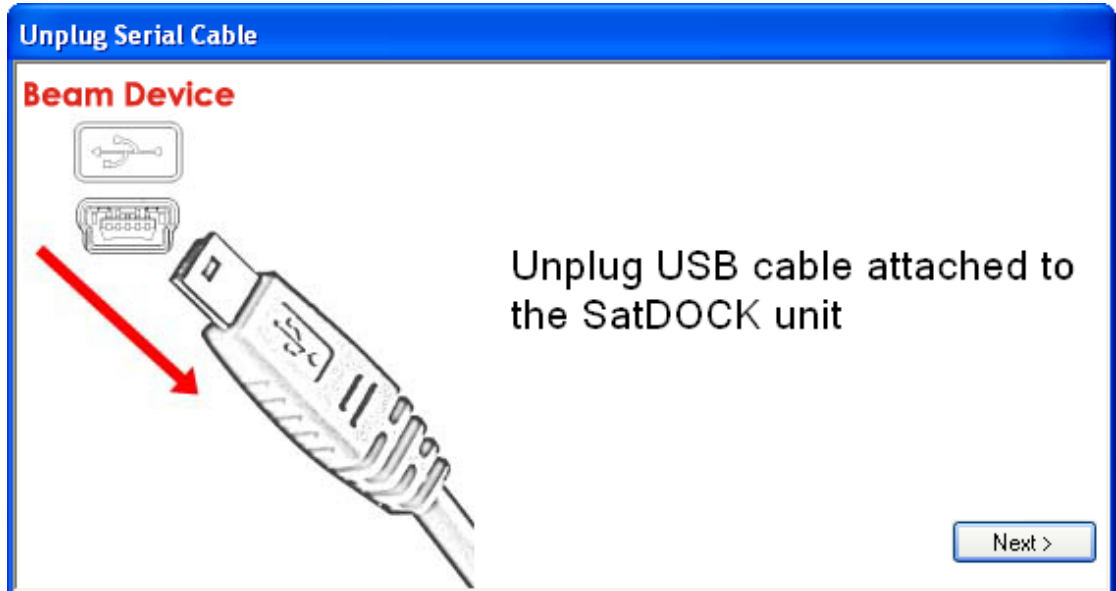
3. To upgrade the firmware click on the “**Upgrade Firmware**” button.
4. A login screen may appear allowing you to select a COM port.



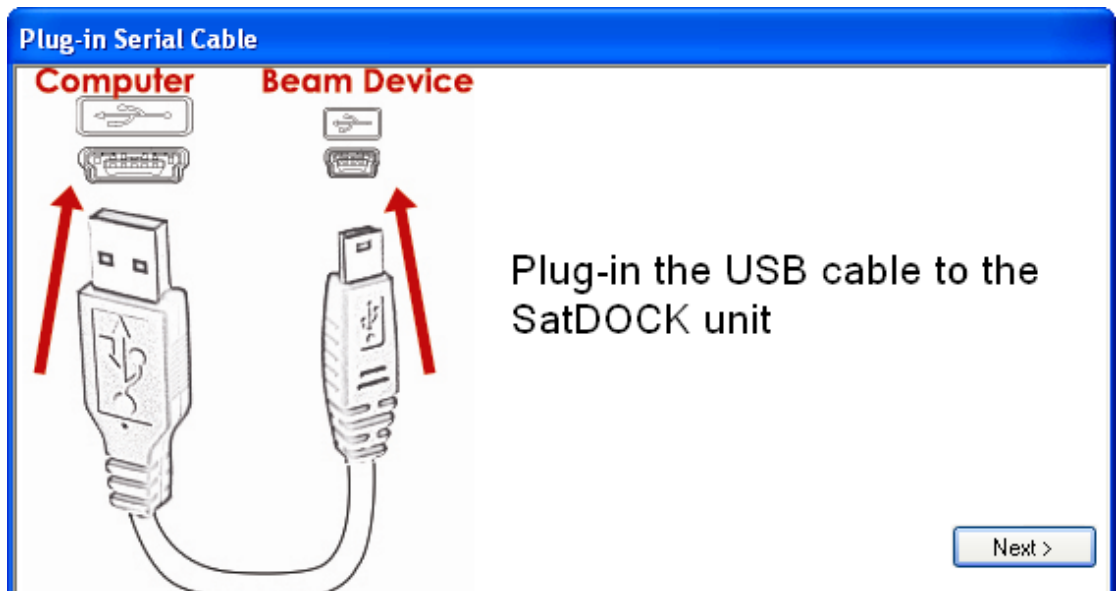
If you are not sure what port you are using, you may click on the “**Find Unit**” button to find the unit on an available port automatically.

You may also be asked to enter a PIN number if your PIN number is different to the default PIN (3170).

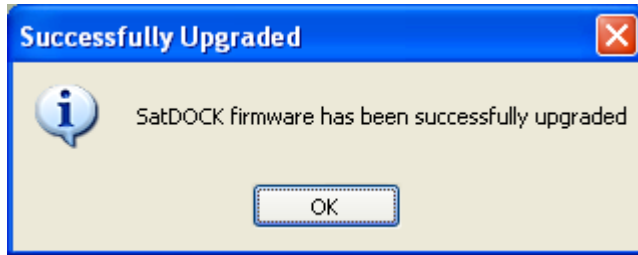
5. You will be prompted to unplug the USB cable from the SatDOCK.



6. After a few seconds another prompt will appear to reattach the USB cable



7. Once the unit is programmed a message will appear stating the result of the process.



8. The SatDOCK 9555 Status fields will automatically be updated after reprogramming the firmware.

Additional functionality of the upgrade tool

SatDOCK 9555 Status Button

Click **“Refresh Status”** button to update the status of the SatDOCK 9555.

Factory defaults Button

Click **“Apply Factory Defaults”** button to reset the unit back to the factory defaults.